

Phoenix – Mission Planning Aid



Path Profile Analysis and Coverage Mission Planning Aid for RF Communications and Line of Sight operations.

The user is presented with a map based interface and a set of tools to aid mission planning for RF Communications, Line of Sight or a combination of both.

The mapping is based around the ESRI run time engine and supports all standard map formats.

Phoenix supports APP6a symbology for assets and graphical overlays.

Examples applications include:

- Planning of successful communications throughout a mission
- Sighting of radio relays
- Sighting of observation posts
- Sighting of surveillance equipment

RF propagation models include Ground Wave, Irregular Terrain and Skywave Models. Phoenix is designed to allow additional plug-in models to be added as required.

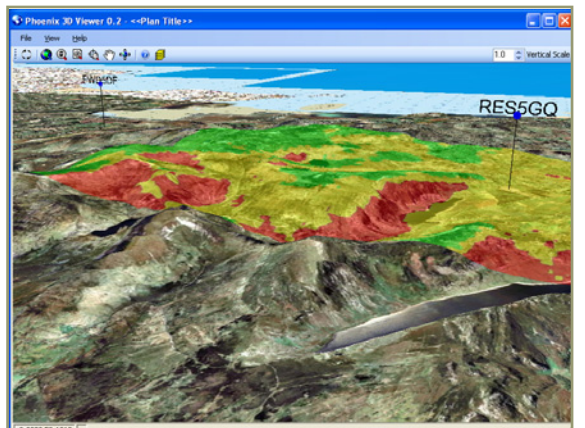
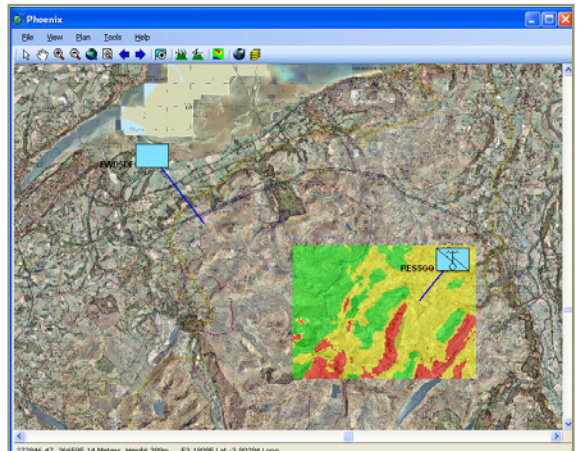
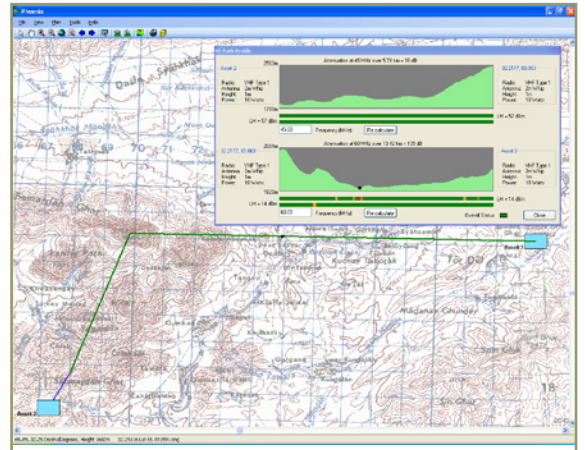
Phoenix presents the user with Red, Amber, Green (RAG) status for RF communication based on configurable radio parameters and Red, Green for Line of Sight.

The user can view single or multi path profiles between assets or map locations.

Area coverage plots are provided indicating RF communication or Line of Sight from an asset or map location.

3-D mapping with associated overlays provides an additional perspective to the user.

Phoenix can be supplied as a standalone software package or on a rugged laptop or handheld PC for field deployment.



“We design, develop and manufacture innovative products and are also experts at integrating existing technology to create successful, cost effective solutions.”



Drumrange Limited

Unit A, The Forum, Hanworth Lane, Chertsey, Surrey, KT16 9JX.
Tel: +44 (0) 1932 581100 Fax: +44 (0) 1932 569646
Email: info@drumrange.co.uk www.drumrange.com

