

COMSIM – Communications Simulation Training System



Drumgrange has implemented a comprehensive training solution for Radio Users. This system allows the users to be trained on the real equipment, but provides complete instructor control on emissions and training lesson conduct. The system is in widespread use across the UK Armed Forces.

DRUMGRANGE COMSIM

The implementation takes the best of breed of COTS hardware and standard software modules together with the in-house developed Training and Control Software and hardware.

KEY FEATURES

Safe use of radios in Classroom environment

Instructor Application provides predictable and repeatable exercises

Mapping Software allows exercises to be run in realistic environment

Built in Radio Propagation models provide realistic attenuation to the radio transmissions taking into account:

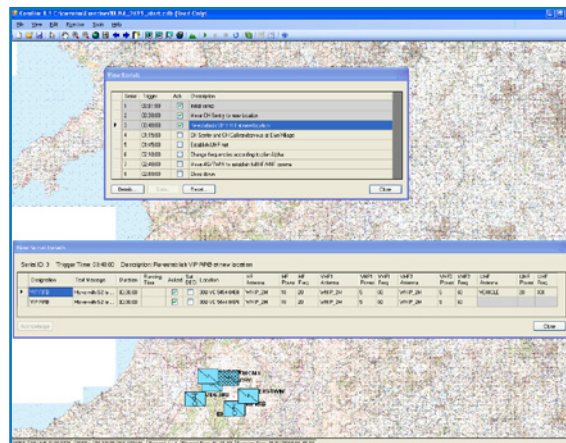
- Frequency
- Location
- Topography
- Time of Day

Detachment parameters such as Tx Power, Mast and antenna selection.

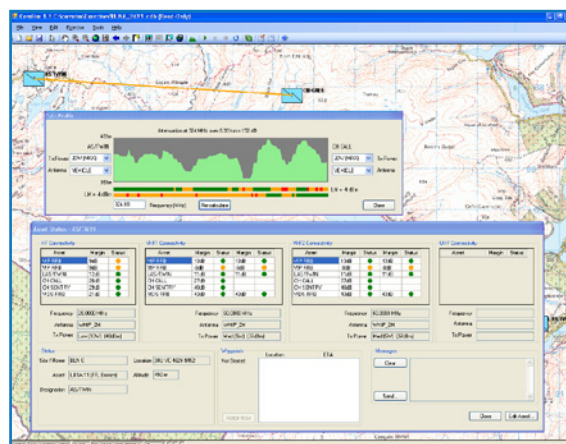
Drumgrange provides full installation of classrooms. Within UK the MOD provides the Radio Installations in bespoke Landrover chassis configurations.

INSTRUCTOR TRAINING AIDS

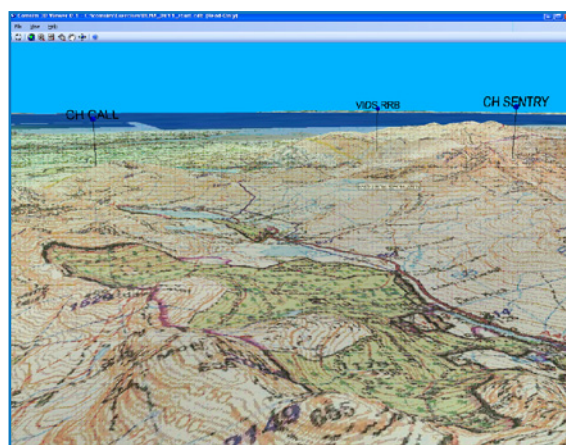
- Exercises can be saved and reloaded to allow repeatable training.
- Exercise Serials: Instructions to Student and acknowledgement and completed tasks.
- Recording of all Student and Instructor actions.
- Waypoint indications are entered by students by use of data entry device.
- Manual Override of propagation models.
- Path profile Analysis.
- 3D viewer.



Instructor definition and control of exercise serials



Link Margin Summary with Path Profile of Selected Link



3D View with detachment locations shown

“We design, develop and manufacture innovative products and are also experts at integrating existing technology to create successful, cost effective solutions.”



Drumrange Limited
Unit A, The Forum, Hanworth Lane, Chertsey, Surrey, KT16 9JX.
Tel: +44 (0) 1932 581100 Fax: +44 (0) 1932 569646
Email: info@drumrange.co.uk www.drumrange.com

